

Our ref: 602052

M4 Roadwork Information Enclosed

M3 Junction 9 Compound
Easton Lane
Winchester
Hampshire
SO23 7GR

11 October 2019

Dear Stakeholder,

M4 Goor Lane (Baydon) Bridge Refurbishment

We will be carrying out work to install new expansion joints in the bridge which carries Goor Lane over the M4, near Baydon. These works will ensure the structure remains in a safe and serviceable condition for road users.

The works are currently scheduled to start on Monday 4th November 2019 and are expected to take two weeks to complete.

For the safety of our workforce and customers, we will need to fully close Goor Lane over the bridge for the full duration of the repairs.

The bridge will need to be closed as we will be carrying out concrete repairs to the corroded ends of the bridge which will involve high pressure water jetting.

During the closures a signed diversion will be in place via Goor Lane and Baydon Road (see map overleaf).

Access for emergency service vehicles will not be available over the bridge during these works.

Please be aware that these works have been carefully programmed but are subject to change due to weather conditions or unforeseen circumstances – **please check the yellow signs placed in advance at the junction for confirmation of the closures dates/timings.**

We would like to apologise in advance for any inconvenience or disruption caused during our work; if you have any questions, or if you'd like to know about our work please contact us on 0300 123 5000 or email info@highwaysengland.co.uk

Yours faithfully

Kathryn Blofield
Communications Coordinator

Diversion Route



Wiltshire Council

Section 14(1) of the Road Traffic Regulation Act 1984

Temporary Closure of: Bailey Hill (Part), Baydon (Ref: TTRO 6227)

Notice is hereby given that the Wiltshire Council has made an Order to close temporarily to all traffic:

Bailey Hill (Part), Baydon; from its junction with Boydon Hole for distance of approximately 600 metres in a southerly direction.

To enable: Kier Strategic Highways to carry out remedial works to repair defective north expansion point and associated maintenance works.

Alternative route: via Bailey Hill (unaffected length) – Ermin Street - Baydon Road – Russley Park - Goor Lane and vice versa.

The closure and diversion route will be clearly indicated by traffic signs.

This Order will come into operation on 04 November 2019 and the closure will be required until 15 November 2019. It is anticipated that the works will take the stated duration to complete depending upon weather conditions. Access will be maintained for residents and businesses where possible, although delays are likely due to the nature of the works. The Order will have a maximum duration of 18 months.

For further information please contact Andrew Shewring (Kier Strategic Highways) on 01256 979896.

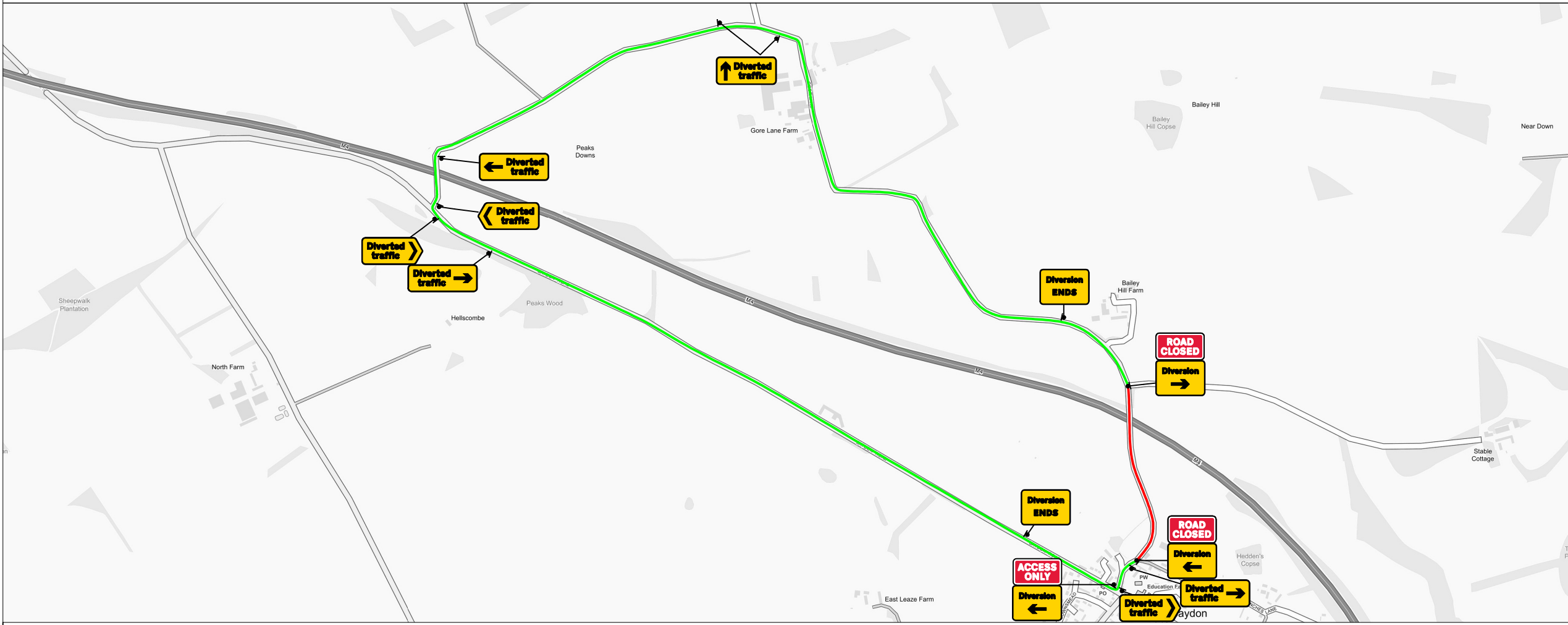
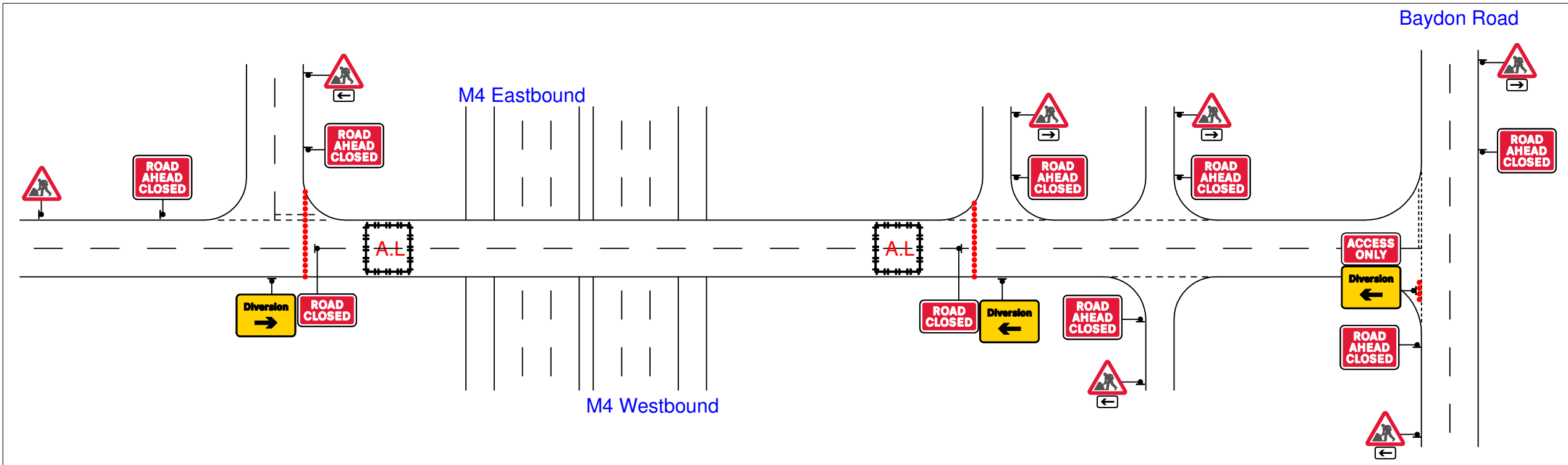
Sustainable Transport Group, County Hall, Bythesea Road, Trowbridge BA14 8JN

31 October 2019

Road: M4 Carriageway: Overbridge Work Area Start - Goor Lane Work Area End - Goor Lane



SITE SPECIFIC NOTES OR DESCRIPTION OF WORKS: Design Process SF42A & SF42B



Chapter 8 Details

DETAIL A (A)
 Prescribed sign to Diagram 610 above and behind cones
 Running lane(s) Three only close spaced 750mm or 1m high traffic cones
 Hard Shoulder 45°
 Verge

Notes:
 1) During darkness, a single warning light to BS EN 12352:2006 should be provided.
 2) Traffic cones should conform to diagram 7101.1 and to BS EN 13422.

DETAIL B (B)
 Single/Dual carriageway 40mph or less - 450mm traffic cones, spacing 1.5m.
 Single/Dual carriageway 50mph or more - 750mm traffic cones, spacing 1.5m.
 Dual carriageway national speed limit - 750mm traffic cones, spacing 1.5m, relaxation 3m.

Notes:
 1) During darkness, warning lights to BS EN 12352:2006 should be provided in accordance with Table A1.3 (Appendix 1).
 2) 45° tapers have 1.5m spacing, no relaxations.
 3) On motorways and NSL AP duals with hard shoulders, 1m cones will be required for both standard and relaxation works for lead tapers and the facing wall of lane changes.

DETAIL C1 (C1)
 9m
 Single/Dual carriageway 40mph or less - 450mm traffic cones.
 Single/Dual carriageway 50mph or more - 750mm traffic cones.

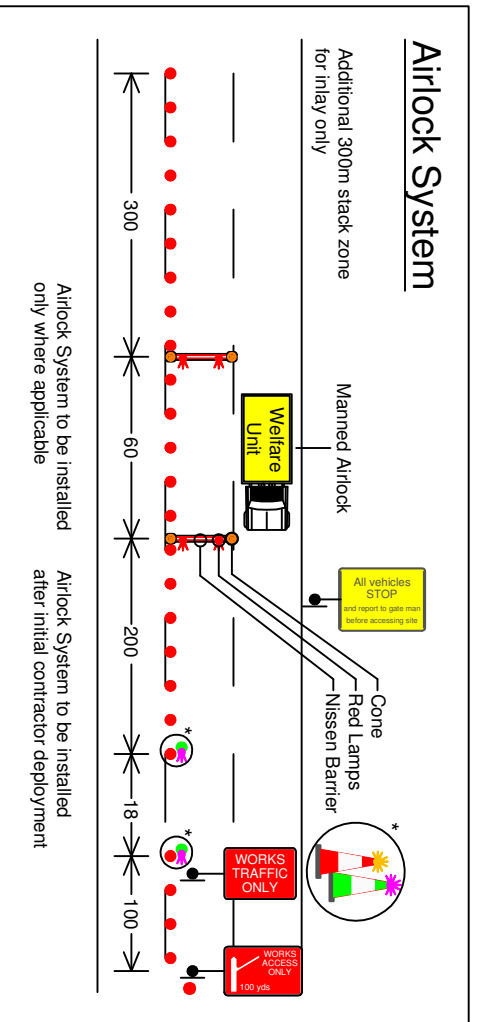
Notes:
 1) During darkness, warning lights to BS EN 12352:2006 should be provided in accordance with Table A1.3 (Appendix 1).
 2) For relaxation to Detail C1 see Table A1.3 (Appendix 1).

DETAIL C2 (C2)
 3m
 Single carriageway 40mph or less - 450mm traffic cones.
 Single/Dual carriageway 50mph or more - 750mm traffic cones.

Notes:
 1) During darkness, warning lights to BS EN 12352:2006 should be provided in accordance with Table A1.3.

DETAIL D (D)
 18m
 Single/Dual carriageway 40mph or less - 450mm traffic cones.
 Single/Dual carriageway 50mph or more - 750mm traffic cones.

Notes:
 1) During darkness, warning lights to BS EN 12352:2006 should be provided in accordance with Table A1.3 (Appendix 1).
 2) Detail D applies only to relaxation cases.



The information in this drawing may not be copied or used by a third party without the written consent of Chevron Traffic Management Ltd.
 This layout is for installation by NRSWA, 12A, 12B, 12D qualified persons and may be modified to suit any and all road layout conditions at the time of installation.

1. All signs and cones to be in accordance with chapter 8-2009, the TSRGD and current IANs. 	2. Works access and egress locations to be agreed prior to Traffic Management installation 	4. Road danger lamps may be omitted from longitudinal coning subject to an on site risk assessment	Approved by:	FRM 34:	Drawn by:	L.Johnson	Scheme ref:	602052		
			APPROVED By Stuart Taylor at 7:23 am, Jun 17, 2019		Checked by:	A.Massey	Drawing title:	M4 Goor Lane - Full Closure of Overbridge		
					Date:	14.06.2019	Drawing No:	602052-CTM-M4-GOORLANE-OVERBRIDGE-FC		
					Scale:	Not to Scale	Contains OS data © Crown copyright and database right 2017			