



Marlborough Area Police report July 2017.

Hello and welcome to this Community Policing Team report.

Wiltshire Police recently ran a 'tweetathon' from the Crime and Communications Centre (CCC) at Police HQ. The event shared some of the calls received by Wiltshire Police to raise awareness of the breadth of work we deal with and to highlight the sorts of calls that are not emergencies.

This was part of wider reaching work, aimed at improving the service that people receive when they call us. We are aware of the issues that some people have experienced, particularly when using the 101 service.

As part of the Community Policing Model, we aim to deploy resources more efficiently. We look to ensure that the right people with the right training are in the right place and that starts with the CCC.

Wiltshire Police is on a journey of continuous improvement and will always seek to ensure that the service we provide is at the high quality you rightly deserve and expect.

Please follow us on:

Twitter <https://twitter.com/wiltshirepolice>

Facebook <https://www.facebook.com/wiltshirepolice/>

Or sign up to Community Messaging <https://www.wiltsmessaging.co.uk/>

COMMUNITY MESSAGING.



Working with our local communities, we have been developing ways to reach out to all our communities and keep everyone up to date with the latest information that matters to you in your area.

feedback@wiltshire.police.uk

Through feedback and working with our local communities, we have developed the use of <https://www.wiltsmessaging.co.uk/> and are now sending out daily updates around crimes that matter to you in your area. This is enabling us to reach as much of our community as possible, as quickly as possible and impart any new crime prevention advice or information about incidents that may affect you in your community that we feel you need to know about.

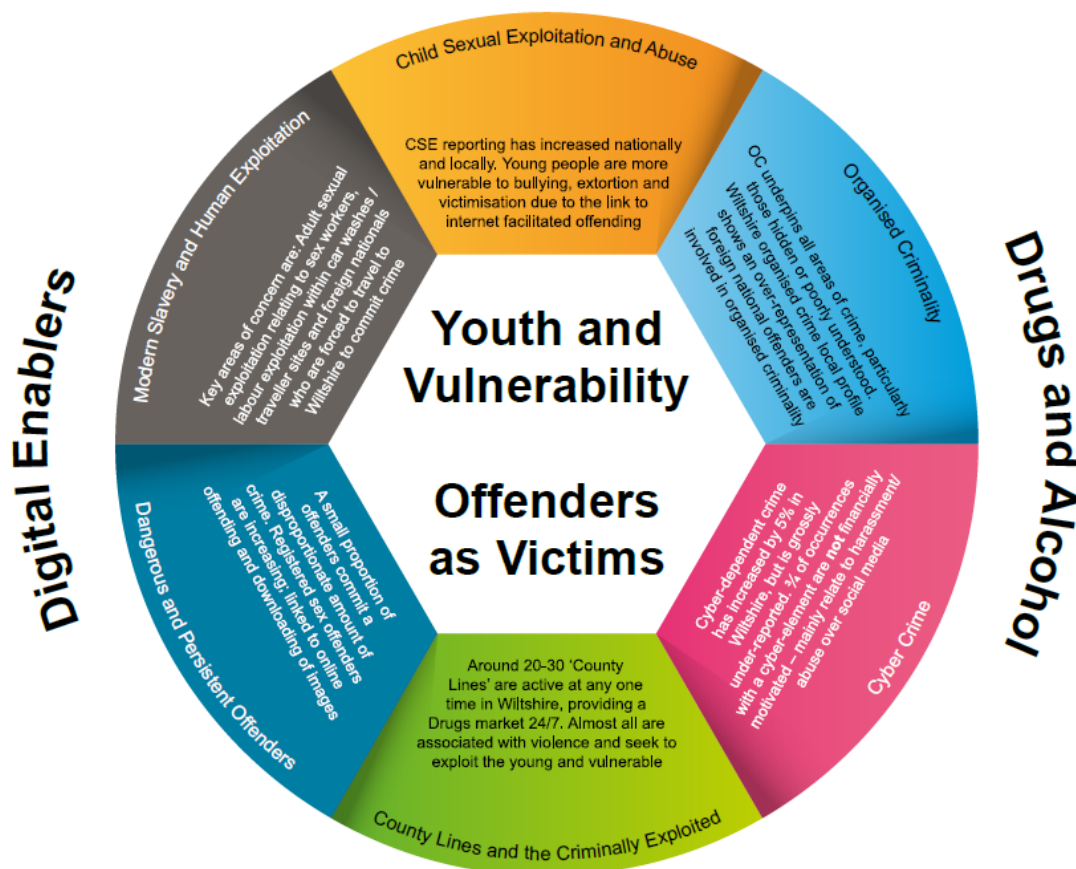
We have received some very positive feedback around this and encourage you to speak to all members of your community and encourage them to sign up to Wiltshire Messaging. It is free and a very good way of keeping all our communities connected.

<https://www.wiltsmessaging.co.uk/>

CONTROL STRATEGY

Below is our control strategy for your reference. This focuses on where how we conduct our operational Policing based on the Police & Crime Plan. We will continue to align our resources with the threat/harm/risks presented in line with the control strategy.

Child Sexual Exploitation & Abuse / Organised Criminality / Cyber Crime / County Lines & the Criminally Exploited / Dangerous & Persistent Offenders / Modern Slavery & Human Exploitation



PRIORITIES

ASB Waitrose car park & Coopers Meadow

Targeted patrols behind Waitrose car park and Coopers Meadow are part of this priority which was implemented on the 8th of June from reports of littering and cannabis use in the area. Local Officers will use a variety of tools such as, Cannabis street warnings, Community Protection warning notice, Acceptable behaviour contracts and Dispersal orders where appropriate. We will also continue to utilise multi-agency approach and include the expertise of Wiltshire Council's Anti-Social behaviour team to reduce the issues.

We are aware that anti-social behaviour often increases as the weather improves and as such this priority will remain open until we are satisfied with the outcome.

Community intelligence is crucial for us to achieve this aim so please continue to report incidents, information and any concerns.

Dwelling and non-dwelling burglaries.

Over 300 targeted patrols have occurred since this niche priority was created on the 26th October 2016 (at the commencement of CPT). The demonstrated effort from CPT East patrols and work continuing enquiries, has shown an improvement, as since the last Area Board meeting, burglaries in the Marlborough area have decreased from thirty nine to twenty two over the two month period of May and June.

Of the twenty two reported crimes, a total of four business premises were burgled across Manton, Ramsbury, Wilton and Ogbourne St Andrews. An Offender was detained and arrested at the scene of the crime in Wilton and a combination of witness information and forensic evidence has led to a potential identification of a suspect for the burglary in Ogbourne St Andrews, enquiries are progressing with the investigation.

A total of five residential properties were burgled between May and June, two of these in Albourne and Broad Hinton, were unoccupied at the time of the incident where no items have been reportedly stolen. On the 2nd of May in Marlborough a property was forced entry with items of jewellery taken. An extensive investigation is continuing through a combination of forensic evidence, CCTV and vehicle enquiries. On the 19th of May, a dwelling burglary in Great Bedwyn where the suspects were disturbed whilst inside the property led to arrest of two suspects from a combination of witness dash cam and forensic evidence. Enquiries are progressing whilst the suspects have been released under investigation.

An Aggravated burglary on the 26th of May in Ogbourne St George took place where the residents were held captive to a violent ordeal lasting up to almost half an hour. The Offenders were eventually discovered by another family member and left the since prior to Police arrival. A large scale investigation continues to identify the suspects.

A large proportion of the burglaries occurred to either sheds or garages during this period, items such as Gardening equipment, power tools and bicycles have been targeted. The Ramsbury area experienced five of these types of crime, with two in Albourne and one each in Mildenhall, Alton Priors and Burbage. Enquiries are continuing for the Ramsbury area, with efforts to identify potential suspects.

Wiltshire Police will be continuing to try and limit the number of offences by pro-active policing and ongoing policing operations in these areas.

A rural crime operation was carried out in early February. This involved local estate managers and gamekeepers, as well as our colleagues from Thames Valley Police, there are more planned in the coming weeks and months alongside our Special Constabulary colleagues.

Community intelligence is crucial for us to achieve this aim so please continue to report incidents, information and any concerns.

Theft from motor vehicles

A determined effort has been made by the east community policing team to deal with theft from vehicles, particularly at beauty spots.

This policing priority has focused upon proactive, preventative interventions including a red route system of targeted patrols, (over one hundred completed thus far), crime reduction work with The National Trust and English Heritage and increased signage and community engagement.

Over 300 targeted patrols have been completed in relation to this priority. Nine thefts from motor vehicle offences have occurred within the past month across the Devizes, Pewsey & Marlborough area with locations of Martin Sell Hill, Milk Hill, Pewsey White Horse, Everleigh Road & Roundway Hill White Horse.

Several of the beauty spot locations recently targeted currently have no Police warning signage – having been forcibly removed, which includes our posters. Thank you for funding further metal Police warning notice signage for fitting at such locations, these will alert our visitors of the need to be vigilant and not to leave any valuables within parked and unattended vehicles.

Operation Esso was conducted on Saturday 29th April – this saw nineteen special constables active throughout our area. This was a roads policing operation, involving active ANPR work, the use of UNIPAR machines for speed enforcement and assistance with response policing and this particular policing priority.

Such events are effective in keeping our communities safe. In total, 62 drivers were given words of advice for excess speed and the manner in which they were driving. Seven endorsable fixed penalty notices were issued for speeding during the operation which targeted the main causes of serious collisions on our roads, also known as the Fatal Four:



Update re Rural Crime Partnership

Recent meetings have been held with local farmers in east Wiltshire and the WCC Rights of Way Officer in relation to discussions concerning the use of byways for illegal purposes which is most impactful upon our east Wiltshire community. We are working together with our partners to consider relevant legislation and powers available for our use to robustly manage those offenders and offences identified.

Activity around hare coursing is a focus of concern and our Rural Crime Team are planning forthcoming policing operations.

Operation ASTEN has involved dealing with illegal off roaders on Salisbury plain. These policing operations have continued in recent weeks with engagement and relevant disposal of offences identified.

EVENTS

Devizes Muslim Community are holding Eid Celebrations to mark the end of Ramadan, at Devizes Sports Club, London Road on Sunday the 9th of July between the hours of 12:00 – 17:00. The event will be attended by Devizes MP Claire Perry and the Mayor of Devizes, who will both be providing speeches. The event will include a Celebration lunch, Fund raising, Children's activities and Henna art, with monies raised going to The Devizes Foodbank. Last year the event received a large turnout.

Our local officers continue to visit Marlborough Market – High Street 9am – 2pm, first Wednesday of each month for monthly community consultations.

EVENT PLANNING

As are now in full Summer bloom, many groups and individuals start to organize various events and gatherings. A toolkit is available from Wiltshire Council which gives fantastic guidance and advice for most types of events, including topics ranging from traffic management to toilets, and gives contact details for which agencies and departments need to be contacted when applying for various licences or road closures.

It can be found at <http://www.wiltshire.gov.uk/public-events-toolkit.pdf>

In essence, all organisers must be responsible for identifying any risks and putting in measures to remove or reduce them.

Aldbourn

1x Criminal damage to a post

1x Non dwelling burglary to garage. Petrol and chainsaw stolen

Baydon

1x report of ASB between neighbours

Ramsbury

1x Criminal damage caused to vehicle

2x non dwelling burglary to garages. Hedge trimmer and bike stolen

1x report of sat nav stolen from car

Chilton Foliat

1xRTC

Froxfield

1xRTC

Mildenhall

1x theft from vehicle

1x garage break. Garden machinery stolen.

**Your local officer is; PCSO 6195 Lucy Stonestreet
(lucy.stonestreet@wiltshire.pnn.police.uk)**